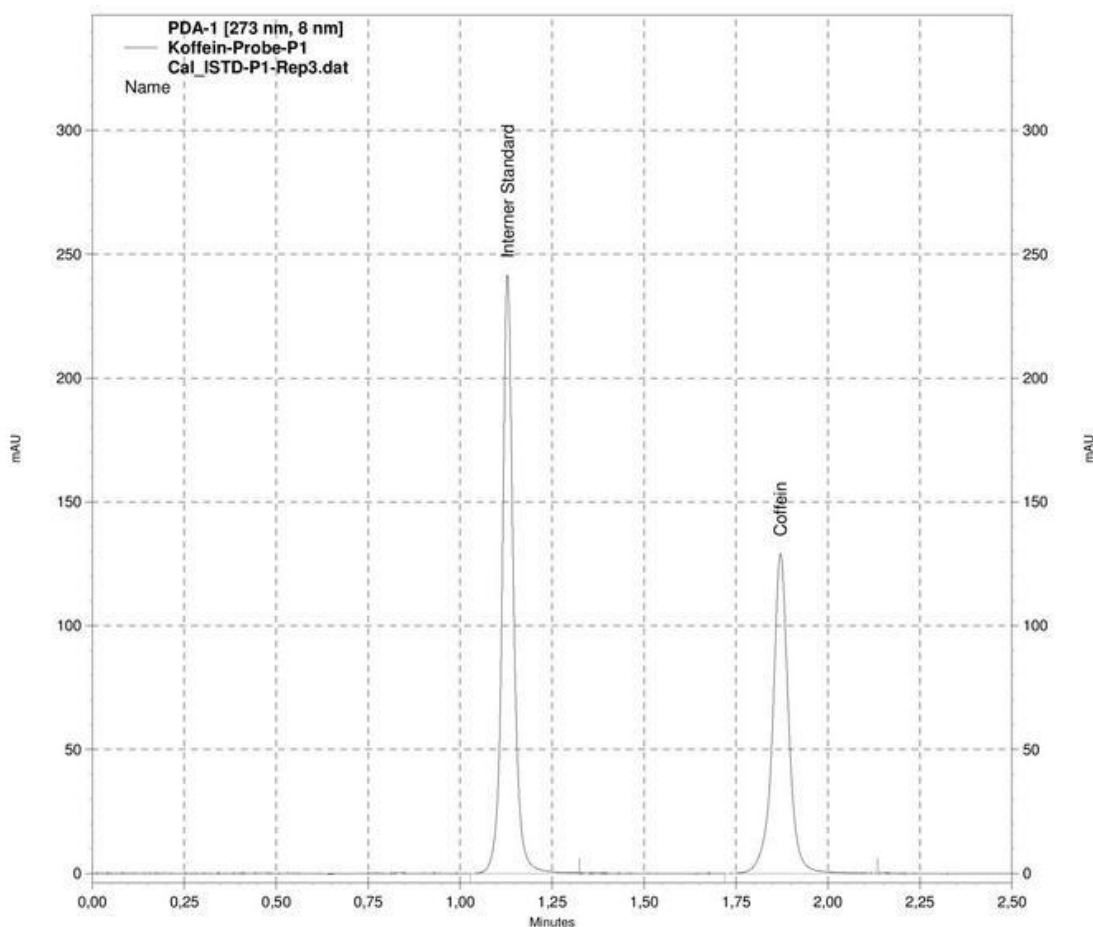


Internal Standard Report

Method Name: D:\Enterprise\Europa\Method\U - 0.5ml - 10-90 - C1 - 190-400nm - 02,5min - 273nm - 40-23°C - 50 Hz - Cal Cof INST.met
 Data: D:\Enterprise\Europa\Result\2016\2016 - Tests und Kalibrierungen\Koffein 150416 Int.
 Standard\Cal_ISTD-P1-Rep3.dat
 User: SYSTEM (SYSTEM)
 Acquired: 15.04.2016 12:15:33 (GMT +02:00)
 Printed: 20.04.2016 10:33:45 (GMT +02:00)

ISTD Probe Koffein P1 - Einwaage: 43,0 mg - Knauer BlueOrchid C18 1,8µm 2 x 100mm - 273nm



PDA-1 [273 nm, 8 nm] Results

Pk #	Name	Retention Time	Area	Koffein µg/ml
1	Intermer Standard	1,129	511442	0,00
2	Coffein	1,871	390412	42,91

Totals			901854	42,91
--------	--	--	--------	-------